

⚠ Handling Precautions

- When attaching this device, please be sure to abide by the warnings set out by the makers of the PC and peripherals.
- Please keep the inside of electrical goods, cables and connectors out of reach of small children. They may get injured if allowed to touch.
- Do not touch this device with wet hands. This can cause electric shock or failure.
- If smoke, strange smells or noise comes from the device, switch off the PC and peripherals and remove the plug from the socket immediately. If you continue to use, there is a risk of electric shock or a short causing a fire. Please consult our support center or the place of purchase.
- Please do not pour liquids on this device or put foreign objects inside. If liquids or foreign objects get inside switch off the PC and remove the plug from the socket immediately. If you continue to use, there is a risk of electric shock or a short causing a fire. Please consult our support center or the place of purchase.
- Please do not use this product in places of high humidity or moisture such as the bath. There is a risk of fire, electric shock or breakage.
- If this electrical device is used by a child, please use under the supervision of an adult that understands how to use the device.
- Do not take apart, alter or repair this device by yourself. This may cause fire, electric shock or failure. We may refuse to repair the product if the cover or seal is removed.
- Do not drop or subject the device to strong impact. If you continue to use, there is a risk of electric shock or a short causing a fire. Please consult our support center or the place of purchase.
- Do not place objects on the device. This may scratch or cause the device to fail.
- Do not clean this device with organic solvents such as Benzene or Thinners. To remove dirt, use a clean dry cloth. If the device is really dirty, wipe with a clean cloth soaked in neutral detergent and wrung out well.
- Discharge your body by touching a nearby metal object (such as a door knob or aluminum sash) before touching the device.

- Handle your PC and peripherals after reading the manual for each device, following procedures set out by each maker.
- Remove dirt from the connecting pins. Do not touch the connecting pins. This may cause the device to fail.
- Be sure to backup all the data on your PC (hard disk) to MO disc or floppy disc before making even small changes to your PC's environment such as attaching or removing the device or installing software. Having a backup will minimize the loss or damage to your data resulting from failure or misuse. Please be advised that we cannot assume responsibility for any data loss or damage resulting from failure to make a backup.
- Be sure to backup the device's data and internal PC data (hard disk) to another media (such as MO disc or floppy disc). There is a risk of data loss or damage in the following cases.

Misuse. When exposed to static electricity or electrical noise. Breakdown. Removing the device or turning off the power whilst it is in use. Damage due to natural disasters.

- Please be advised that, not being limited to the above cases, we cannot assume responsibility for any data loss or damage resulting from failure to make a backup.
- Please do not attach the device when it is dusty or covered with dirt.
 - Do not power off the PC or reset the system while the access light is blinking. This may cause data loss or damage.
 - Do not use or keep in the following places. May cause electrical shock, fire or adversely affect the device or PC.

Locations exposed to electric noise or static electricity. Temperature or humidity levels exceeding operating environment levels designated in the manuals for each device. Corrosive places.

- When disposing of this device, please follow the local authority regulations. For details of regulations, please inquire to your local authority.

SD Container 4.0

A Security USB device that forcibly encrypts data

User Guide

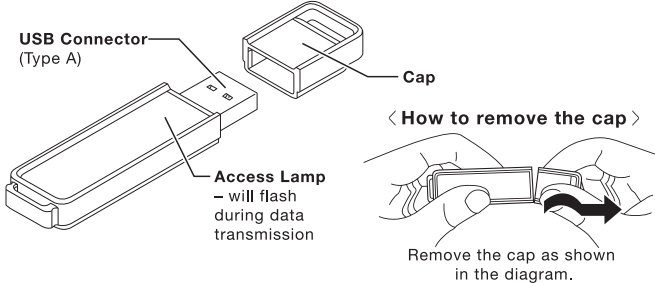
**Please be sure to read the manual before using the device.
Please keep the manual in a safe place after reading.**

Caution Please be careful of loss or theft of this device. There is a risk of personal information leakage to third parties from loss, theft, embezzlement or fraud with this device. Please be advised that we cannot assume responsibility for any loss due to leakage of personal information to third parties.

Package Contents

The items below are included in the package. If, for some reason, there is something missing, please contact the shop where you made the purchase.

- **USB Flash Memory (this product)** x1



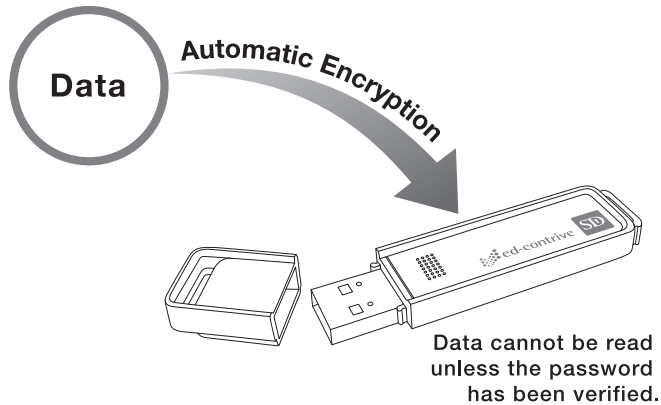
- **User Guide (this document)** x1

* The warranty for the product is printed in this manual. When sending for repair, please cut out after filling in the necessary details and send together with the product.
* When including any additional information, please be sure to note it on a separate sheet.

Please read before using

Product Overview

This product is a USB Flash memory device with built-in hardware encryption. Saving data to the device does not require any special operation, it will be automatically encrypted. A password is required when reading or writing data to the device so viewing, deleting or editing of the data by others can be prevented.



Recognized Drive Types

On connecting this device to a computer, 2 drives will be detected. When using Windows Vista/XP these will be [Removable Disk] (After password verification becomes [USER_DRV]) and [MANAGE_DRV]. "Removable Disk (USER_DRV)" is the User Drive and can store data after password verification. [MANAGE_DRV] is the Admin Drive and is used for password verification. When using Windows 2000/Me/98SE, 2 drives called "Removable Disk" will be detected. The first one is the User Drive and can store data after password verification. The second one is the Admin Drive and is used for password verification.

Caution Please note that the Admin Drive ("MANAGE_DRV" or "Removable Disk") cannot be used to store data.

User Drive (first drive)
[USER_DRV] or
[Removable Disk]



This drive is used for storing data. It cannot be used until the password is verified. Data stored on this drive will be automatically encrypted.

* On Windows Vista/XP before password verification, "Removable Disk" will be displayed and after password verification "USER_DRV" will be displayed.

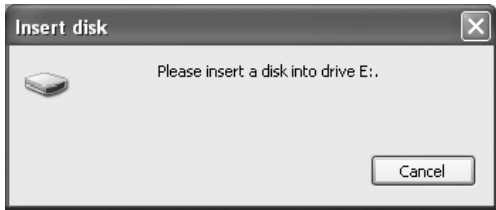
Admin Drive (second drive)
[MANAGE_DRV] or
[Removable Disk]



This is the drive where the password verification program "sdc4.exe" is stored. Data cannot be stored on this drive.

Accessing the User Drive before verifying the password

If you try to access the User Drive ([USER_DRV] or [Removable Disk]) before verifying the password, "Insert a disk into the drive" message will be displayed and you will not be able to access the drive. Also, filenames will not be readable.



The above window will be displayed and access will be denied.

For Windows 98SE Users

A device driver will be necessary to use this device. Please install the driver from our homepage (<http://www.safety-disclosure.jp/user/support/>). Installation instructions are also on our homepage.

Note When using Windows Vista/XP/2000/Me, there is no need to install a driver. On connecting the device to the PC, the OS will automatically install the driver.

Terms of Warrantry

These terms stipulate the conditions for warranty concerning repair of the product purchased by the customer. This warranty can be revoked if the customer does not agree with the terms stipulated in these articles. In this case, please return the product to us or the place of purchase without using it. These terms do not limit the rights of the user under law.

Article 1(Warranty Period)

If the product fails to function ("failure") within one year of purchase having used it in a normal state, in Japan and in accordance with the instruction manual, we will repair the device subject to the conditions set forth below.

Article 2(Free Warranty)

If the product breaks down within the previously stated warranty period, the customer will be eligible for free warranty by requesting repair. However, if any of the following cases are applicable, the free warranty will not apply even within the warranty period.

- 1 If no warranty or receipt from time of purchase is produced or attached when requesting repair.
- 2 If the date of purchase, customer's name, place of purchase has not been filled in or the text of the warranty has been rewritten
- 3 Damage or breakdown due to misuse by the user, unreasonable modification or repair, disassembly or connection to devices other than those specified by us.
- 4 Damage or failure due to natural disasters such as fire, earthquakes or storm and flood damage or external factors such as abnormal voltage.
- 5 Failure due to careless handling (outside of user manual guidelines such as mistaken usage, dropping, shock, water spills, being covered with sand or mud, water getting inside, sand or mud getting inside) or negligent care (such as mold).
- 6 Devices attached to this product.
- 7 Replacement of parts due to natural wear and tear.
- 8 The cause of failure is other than this device (such as power supply, another device) when being checked or repaired.
- 9 Other than those set forth above, when it is recognized the cause of failure is due to the customer's usage.

Article 3(Repairs)

Repairs based on these terms are carried out under the conditions stipulated in the following items

- 1 When requesting repairs, please ship the product to our support center. Please check the user guide (including electronic manual) that comes with the product for details of the support center. The sender should bear the shipping cost. When shipping the product, please use a means that gives a shipping receipt such as a courier. Please refrain from sending by mail.
- 2 We will perform disassembly, parts replacement or maintenance on products for repair. However, if the repairs should be difficult or the cost of repair exceeds the cost of the product, we will replace the product under warranty with another product having the same capabilities.
- 3 When repairing data storage devices such as USB memory or media it may be necessary to replace the product or format the media, depending on the type of repair. However, we will not backup the stored data. Further, we will not assume any responsibility whatsoever for loss or corruption to that data.
- 4 Under free repairs, we will properly dispose of any old replaced parts or old products.
- 5 Under paid repairs, we will properly dispose of any old replaced parts or old products, but if the customer so notifies us when requesting repairs, we will return the old parts. However, depending on the type of part, we may not be able to return it.

Article 4(Disclaimer)

1 Regarding the product purchased by the customer, any damage based on illegal use or non-fulfillment of obligations, excluding deliberate or serious errors by this company, is limited to the cost of the product concerned.

2 This warranty applies to the functionality of the product purchased. We do not guarantee any loss of or damage to data stored in the USB memory.

Article 5(Effective Area)

These terms are only effective within Japan. We do not warranty when used overseas.

Regarding Hardware Warranty

In the event of failure under normal operating conditions during the warranty period, based on the below terms of the warranty, return the product with the warranty or receipt from time of purchase to the address below.

< **Caution** >

When sending the product, please use a method with proof of delivery such as a delivery service. Please refrain from mailing. We will in no way assume responsibility for damage during delivery. The repair period is estimated at 7 days from receipt of the product.

Ed-contrive Ltd. SD-Container Support
Wellship Higashi Shinjuku 9F, 6-24-20 Shinjuku, Shinjuku-ku, Tokyo. 160-0022

Inquiries

For inquiries regarding this product, please contact our support center.

- ① Please check our home page first. Please take a look at the "Frequently Asked Questions" for the product on our Support web page.
<http://www.safety-disclosure.jp/user/support>
(User registration is required to view the Support web page)
- ② If your inquiry cannot be resolved through our Support web page, please contact us through the Online form on the Support web page.
We are sorry that we do not accept user support inquiries by phone.

Please have the following information at hand when making inquiries to our support center.

1. OS being used
2. Condition when the problem occurred, details of problem, current status (details of screen state and error messages)
3. Whether or not used with a security tool other than that of this product.

SD-Container4.0
User Guide
First Published 2007/12
Published: Ed-Contrive Ltd.

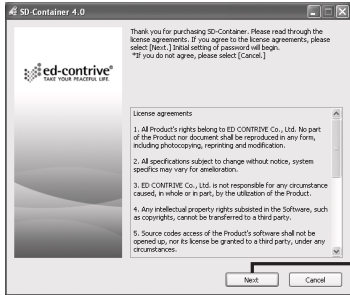
Using the Device (Password Setting/Verification)

Registering the startup password

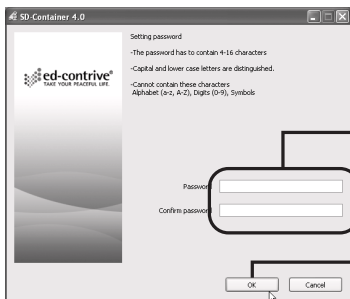
Caution When using Windows 98SE, please follow the steps below after installing the driver.

When using this device for the first time, please follow the steps below to complete initial registration.

1. Connect the device to the USB port on the PC.
2. Double-click the “MANAGE_DRV” icon in “My Computer (Computer)” (in Windows2000/Me/98SE this will be the second [Removable Disk])
3. Double-click [SDC4.exe].
4. Follow the admin wizard to set the optional password.



① Click “Next”



② Set a password (4-16characters) using half-pitch alphanumeric characters.

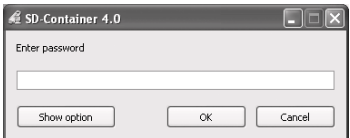
③ Click “OK”

After completing password registration, please continue from Step 3 below in “Booting SD-Container4.0”.

Booting SD-Container4.0

When connecting a device to the PC that has completed initial registration, please perform password verification using the following procedure.

1. Connect the device to the USB port on the PC.
2. Double-click the “MANAGE_DRV” icon in “My Computer (Computer)”(in Windows 2000/Me/98SE this will be the second [Removable Disk]).
3. Double-click [SDC4.exe].
4. The password input box will be displayed. Please enter the password that has been set.



If password verification is successful, it will be possible to access [USER_DRV] (in Windows2000/Me/98SE this will be the first [Removable Disk])

5. Double-click [USER_DRV](in Windows2000/Me/98SE this will be the first [Removable Disk]) in “My Computer(Computer)”

Password verification is complete. Data can be written to and read from [USER_DRV] (in Windows2000/Me/98SE this will be the first [Removable Disk]) just like a hard disk.

Changing the Password

To change the startup password, follow the steps below.

1. Connect the device to the USB port on the PC.
2. Double-click [MANAGE_DRV](in Windows2000/Me/98SE this will be the second [Removable Disk]) in “My Computer(Computer)”
3. Double-click [SDC4.exe].
4. When the screen below is displayed, click the “Show Option” button.



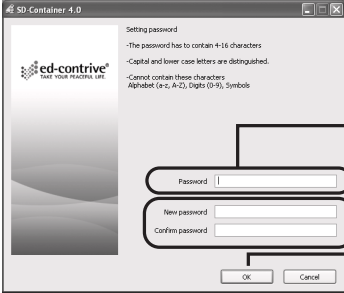
5. Click the “Change Password” button.



Note

Using the Container Admin Tool 4.0, sold separately, the “Operating unlock-code” and “Refriewing remind code” buttons will be enabled when their respective functions are enabled.

6. Set the new password.



① Enter the current password.

② Enter the new password (2 places).

③ Click “OK”

The password change is complete.

Initializing the Device

If you wish to upgrade this device, please access the product support web page with the ID (user name)/Pass (password) you receive by mail on completing the online user registration.

The product support web page contains the initialization tool (upgrade tool).

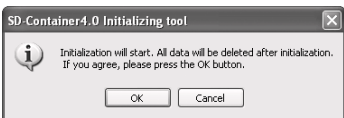
Online Registration
<http://www.safety-disclosure.jp/user>

Product Support Web Page
<http://www.safety-disclosure.jp/user/support/>

Using the Initialization Tool

Caution On initialization, all the existing data on the USB memory will be lost. Use the Initialization Tool only after checking there is no important data remaining on the USB memory device
The Initialization Tool can only be used on Windows 2000 (SP4 or above) /XP/Vista with an account that has Admin privileges.

1. Connect the device to the USB port on the PC.
2. Extract the file downloaded from the Product Support website and double click the Initialization Tool.
3. A confirmation screen about deleting data will be displayed. Click “OK”.



4. Initialization will start. During initialization, popup windows related to the SD-Container4.0 drive may show. Do not remove the device or perform any other operation until initialization has finished.

5. When the Completed screen displays, click “OK”.




How to Remove the Device

Please follow the steps given below to remove the device from the PC.

Note

When the PC is turned off, you can remove the device as is.

Using Windows Vista/XP/2000/Me

1. Click the icon displayed in the Task bar (one of   ) (If this icon is not displayed, please refer to Windows help)

2. Click either “USB Mass storage device” or “USB disk”

Safely remove USB Mass Storage Device - Drives(E:, F:)

Caution

When using Windows Me, be sure to perform steps 1 and 2 twice. Under Windows Me, 2 devices are detected so it is necessary to remove both devices.

When “It is now safe to remove the device” is displayed the device can be removed from the PC.

Using Windows 98SE

Make sure the access lamp is not flashing before removing the device.

Caution

Do not remove the device when the access lamp is flashing. Doing so may result in the stored data becoming corrupted.

Introduction to the Container Admin Tool 4.0

The Container Admin Tool 4.0 is software for the “SD-Container 4.0” Security USB Memory and allows System Administrators to individually customize policy settings and additional functionality based on the Customer's security policy, such as password length, password character type and the User Drive remote lock release function.

Examples of what the Container Admin Tool 4.0 can do:

● Initialization Tool Creation

You can create an Initialization Tool which reflects the settings in SD-Container4.0.

● Password Policy Settings

Allows setting of password length, allowed character types, required character types, password validity period, number of times for password verification failure restriction.

● Releasing User Drive Remote Lock

When the number of times set for password verification failure is exceeded, the lock can be remotely released.

● Password Reminder Function

When the password is forgotten, it can be checked by the Administrator.

● Setting Master Password

It is possible to set a common Master Password.

● Drive Settings

It is possible to add files specified in advance during initialization or set the volume label for each drive.

Other

- This document is the work of Ed-contrive Ltd. Consequently, it is prohibited under law to reproduce, copy, reprint or alter in part or in whole this document without permission.
- The specifications, design or other contents of this product or document may be changed without warning in order to make improvements and there may be parts that are different to that actually purchased.
- The Intellectual Property copyright for this product cannot be transferred to the customer.
- We will not show or give consent to use the source code for this product to the customer. Further, it is prohibited to analyze, disassemble, reverse compile or reverse engineer the software in order to understand its operation.
- Timesharing, lease, rental, sale, transfer or sublicensing of this product's software is prohibited without prior consent in writing.
- This product has been made and designed on the premise that it will only be used in Japan. Do not use outside Japan. Further, we do not provide technical support or maintenance for this product outside Japan.
- Export regulations on this software may be applicable such as strategic materials under the terms of the “foreign exchange or foreign trade law”. When taking out of the country, it may be necessary to apply for permission from the Japanese government to export.
- This product is not intended for use in medical equipment, systems affecting lives either directly or indirectly, or embedded in equipment or machines requiring high safety. Please be advised that we cannot assume responsibility in cases of loss due to this product being used in such systems or equipment. Further, please take all appropriate measures against safety design and failure when using in machines or computer systems requiring high reliability.
- When using this product please follow the guidelines set out in this document. In particular, please do not use in any way that violates the outlined handling instructions. Please be advised that we cannot assume responsibility for any impact as a result of using this product.
- We guarantee to repair this product if it fails under normal operating conditions but we do not make any guarantees regarding loss or damage to stored data. Further, we do not perform any data recovery work. Please abide by the instructions laid out in this document when this product is a used as a USB storage device or used connected to a storage device. In addition, please be sure to periodically create a backup of important data to other media (such as a hard disk). Please be advised that we cannot assume responsibility for data loss, damage or disappearance as a result of the user failing to create a backup or violating the instructions in this document.
- Even under normal operating conditions it is possible the device will cause improper operation of certain hardware or software (such as security software).
- Any damage based on illegal use or non-fulfillment of obligations, excluding deliberate or serious errors by this company, is limited to the cost of purchase of this software.
- The ED-Contrive logo and SD logo are trademarks of Ed-contrive Ltd. All other company names or product names used in this document are usually registered trademarks or trademarks of the respective companies.
- We try to make the contents of document as error-free as possible. If, by chance, there are any dubious points, errors or omissions, please contact the place of purchase or our support center.

cut here

Warranty

This product has passed rigid inspection.
If for some reason this product fails under normal operating conditions, within the warranty period and conditions set out below, we will repair it.

Please be sure to attach this warranty with the request for repair. This warranty will not be reissued so please keep it in a safe place.

Ed-contrive Ltd.

Wellship Higashi Shinjuku 9F, 6-24-20 Shinjuku, Shinjuku-ku, Tokyo. 160-0022.

■User Registration <http://www.safety-disclosure.jp/user>

Name:

Address:

Product Name:

Warranty Period:

1 year from date of purchase

Date of Purchase:

Day: Month: Year:

Please send for repair after attaching some proof of purchase date (such as receipt)

cut here